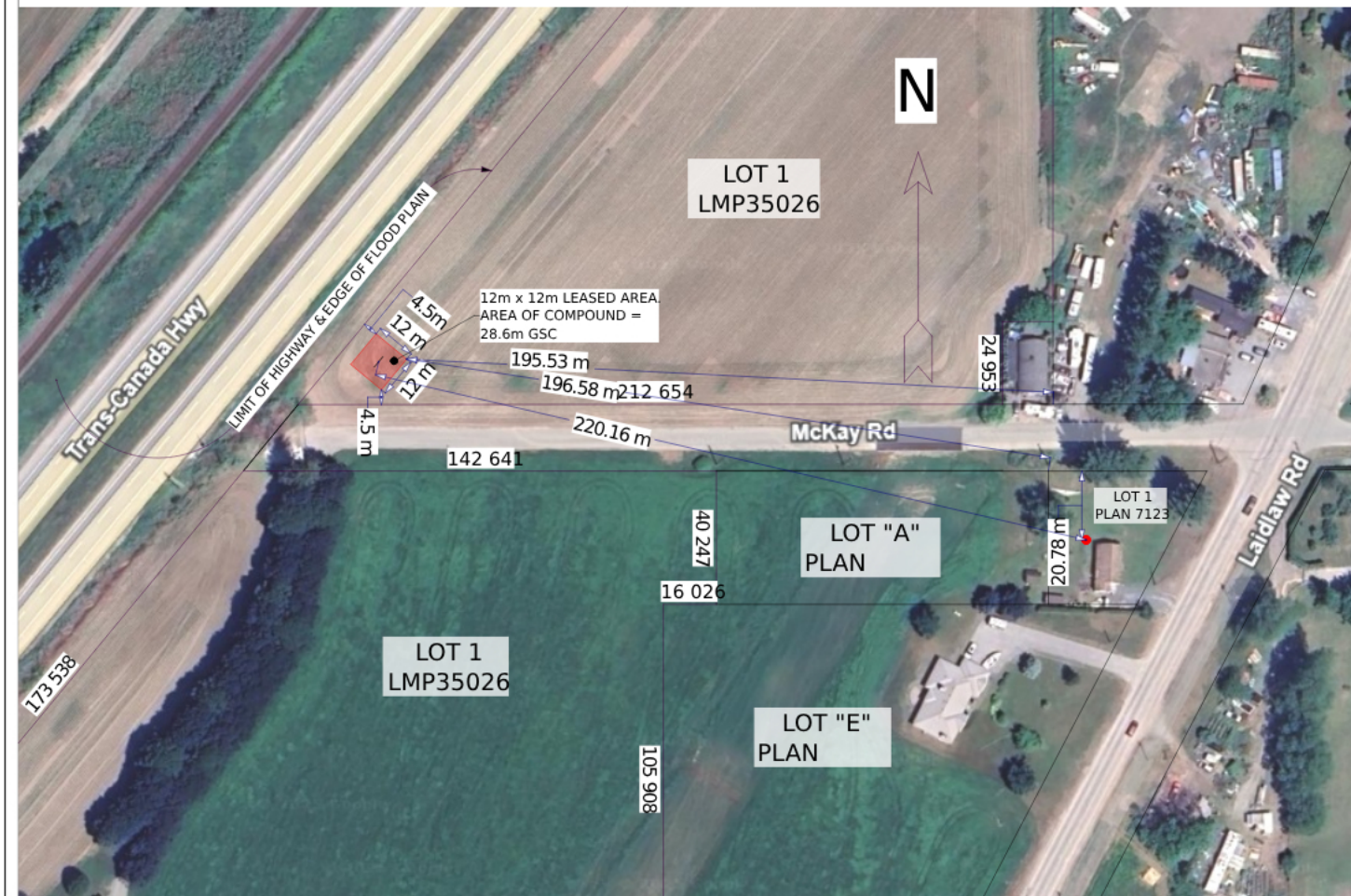


SITE DETAIL



SKETCH OF LEASE AREA

LAND TITLES DISTRICT OF NEW WESTMINSTER
PID: 023-908-963

LOT 1 SECTION 19, 20 AND 30 TOWNSHIP 4 RANGE 27 WEST OF SIXTH MERIDIAN
DISTRICT LOT 8 GROUP 1 YALE DIVISION YALE DISTRICT PLAN LMP35026

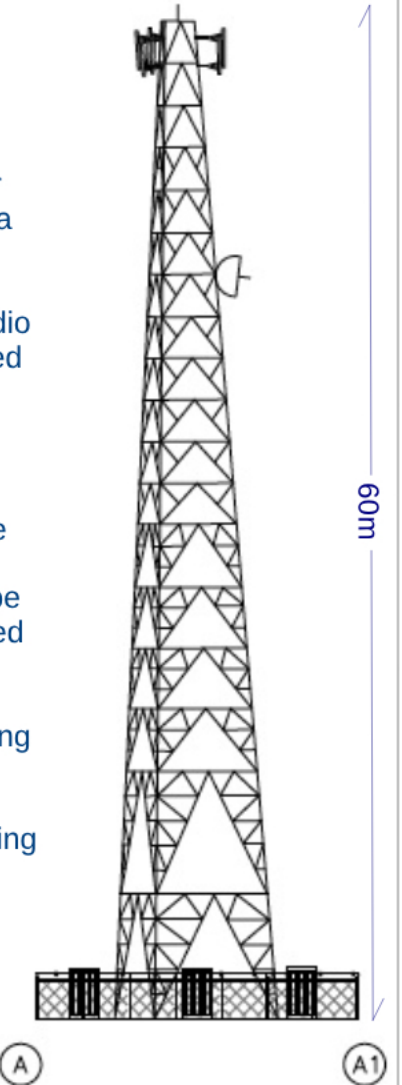
ALL BACK-UP EQUIPMENT FOUND AT THE BASE OF THE TOWER
WILL BE BUILT AT AN ELEVATION OF 1.4M OFF THE GROUND,
OR 30M GSC

SEE DETAIL
DRAWINGS
FOR SIZE AND
DESIGN OF TOWER

- Proposed steel slim line self support tower with lightning protection system. Paint colour subject to nav canada requirements. Antenna number and locations to be determined.
- Foundation design pending soil report.
- Proposed prefabricated galvanized steel radio equipment shelters on cast in place reinforced concrete slab (3.0m x 3.0m).
- Utility connection and routing to be determined by qualified personnel in consultation with local authority.
- Remove existing topsoil. Proof roll subgrade and place 300 mm granular across compound area. Finished gravel surface to be min. 150 mm above existing grade and sloped away from shelter at min. 1% on all sides to provide adequate drainage.
- Proposed 2.4 m high board fence surrounding compound.
- Proposed wood retaining wall/barrier of sufficient height to prevent gravel from washing out towards the woodlands.

ELEVATION PLAN 60 METER FREE STANDING TOWER

ELEVATION PLAN NOT TO SCALE



GPS Coordinates of Tower: 49.323832, -121.616116

Max. Height Calculation: 222.19m divided by 3 = 74m

Drawn By:
JF Drafting Services
High River, Alberta T1V 1B6
Email: jfox3ster@gmail.com
Phone: (403)593-2466

Date:
February 14, 2025

Scale:
1:2000 DETAIL 1:600



Sheet #
1