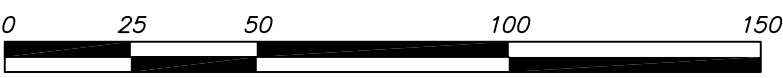


PLAN OF SUBDIVISION OF LEGAL SUBDIVISION 5 EXCEPT: PART
SUBDIVIDED BY PLAN 58987 AND LEGAL SUBDIVISION 12
BOTH OF SECTION 8 TOWNSHIP 22 NEW WESTMINSTER DISTRICT

PLAN EPP_____

LINDELL BEACH BCGS 92G.010



DISTANCES ARE IN METRES

THE INTENDED PLOT SIZE OF THIS PLAN IS 560mm IN WIDTH BY 864mm IN HEIGHT (D SIZE) WHEN PLOTTED AT A SCALE OF 1:1500

GRID BEARINGS ARE DERIVED FROM DUAL FREQUENCY GNSS OBSERVATIONS AND ARE REFERRED TO THE CENTRAL MERIDIAN OF UTM ZONE 10.

THE UTM COORDINATES AND ESTIMATED HORIZONTAL POSITIONAL ACCURACY ACHIEVED ARE DERIVED FROM DUAL FREQUENCY BASELINE TIES TO CANADIAN ACTIVE CONTROL STATION CHWK, STATION No. 987020 (GCM 934364).

THIS PLAN SHOWS HORIZONTAL GROUND-LEVEL DISTANCES UNLESS OTHERWISE SPECIFIED. TO COMPUTE GRID DISTANCES, MULTIPLY GROUND-LEVEL DISTANCES BY THE AVERAGE COMBINED FACTOR OF 0.99962605. THE COMBINED FACTOR HAS BEEN DETERMINED BASED ON AN AVERAGE ELLIPSOIDAL ELEVATION OF 198.7 METRES.

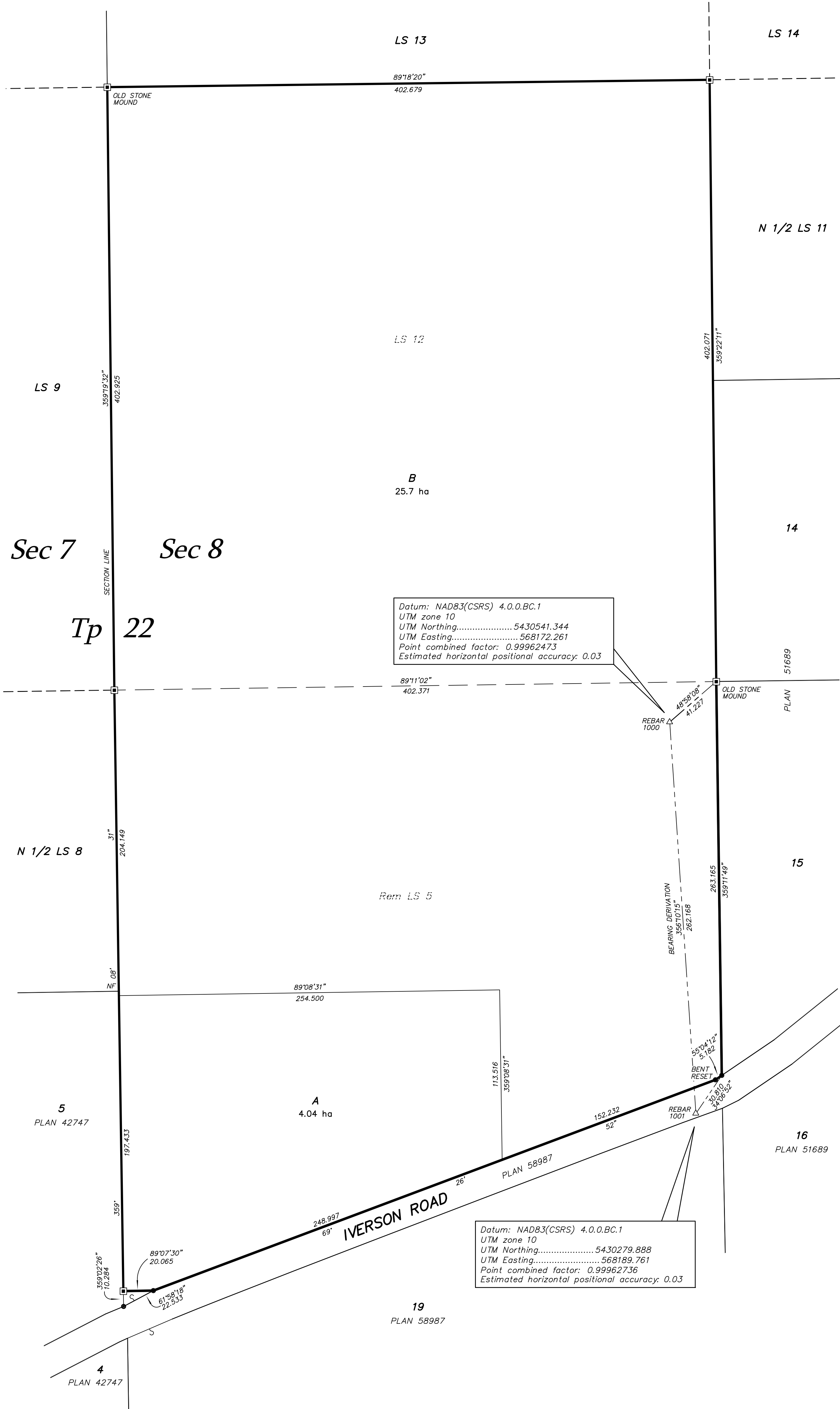
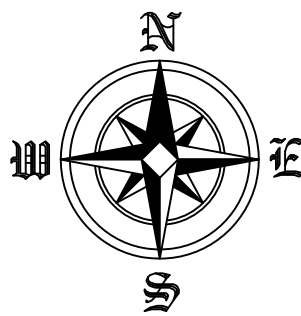
LEGEND

FOUND PLACED

- ○ DENOTES STANDARD IRON POST
- □ DENOTES OLD PATTERN DOMINION IRON POST
- △ DENOTES GNSS CONTROL POINT
- NF DENOTES NO EVIDENCE FOUND
- ha DENOTES HECTARES

THIS PLAN LIES WITHIN THE JURISDICTION OF THE APPROVING OFFICER FOR THE MINISTRY OF TRANSPORTATION AND INFRASTRUCTURE. MOT FILE 2016-02722

THIS SUBDIVISION LIES WITHIN THE AGRICULTURAL LAND RESERVE.



(JULY 28, 2017)

DRAFT

THE FIELD SURVEY REPRESENTED BY THIS PLAN
WAS COMPLETED ON THE ____th DAY OF _____, 2017.
DARRYL J. MITCHELL, BCLS 689

THIS PLAN LIES WITHIN THE FRASER VALLEY REGIONAL DISTRICT



AXIS LAND SURVEYING LTD.
B.C. & CANADA LANDS SURVEYORS
101, 32885 VENTURA AVENUE
ABBOTSFORD, B.C. V2S 6A9
T. 604-853-2700 F. 604-853-2710
FILE : A 5284
DWG : 5284-SUB