

**FRASER VALLEY REGIONAL DISTRICT**

**BYLAW NO. 1457, 2017**

**A bylaw to amend the boundaries of the Cultus Lake Integrated Water  
Supply and Distribution System Capital Construction Service Area**

---

**WHEREAS** the Fraser Valley Regional District Board of Directors ("the Board") has been petitioned to amend and extend the boundary of the Cultus Lake Integrated Water Supply and Distribution System Capital Construction Service Area established by Bylaw No. 1366, 2016;

**THEREFORE** the Board enacts as follows:

**1) CITATION**

This bylaw may be cited as *Fraser Valley Regional District Cultus Lake Integrated Water Supply and Distribution System Capital Construction Service Area Amendment Bylaw No. 1457, 2017*.

**2) ENACTMENTS**

- a) *Fraser Valley Regional District Cultus Lake Integrated Water Supply and Distribution System Capital Construction Service Area Establishment Bylaw No. 1366, 2016*, is hereby amended by extending the boundaries of the Service Area to include the properties shown on Schedule 1457-A attached to and forming an integral part of this bylaw.
- b) Schedule A to Bylaw No. 1366, 2017 is hereby replaced by Schedule 1457-B, attached to and forming an integral part of this bylaw. The amended boundaries of the service area shall be those portions of Electoral Area H as shown on Schedule 1457-B.
- c) That the provisions of all bylaws that are now in effect with regard to the establishment and amendment of the Cultus Lake Integrated Water Supply and Distribution System Capital Construction Service Area shall henceforth apply to those lands outlined on Schedule 1457-B of this bylaw.

**3) SEVERABILITY**

If a portion of this bylaw is found invalid by a court, it will be severed and the remainder of the bylaw will remain in effect.

**4) READINGS AND ADOPTION**

CERTIFICATION AS TO SUFFICIENCY  
AND VALIDITY OF PETITIONS this

25<sup>th</sup> day of January, 2018

READ A FIRST TIME THIS \_\_\_\_\_ day of \_\_\_\_\_

READ A SECOND TIME THIS \_\_\_\_\_ day of \_\_\_\_\_

READ A THIRD TIME THIS \_\_\_\_\_ day of \_\_\_\_\_

ADOPTED THIS \_\_\_\_\_ day of \_\_\_\_\_

\_\_\_\_\_  
Chair/Vice-Chair

\_\_\_\_\_  
Corporate Officer/Deputy

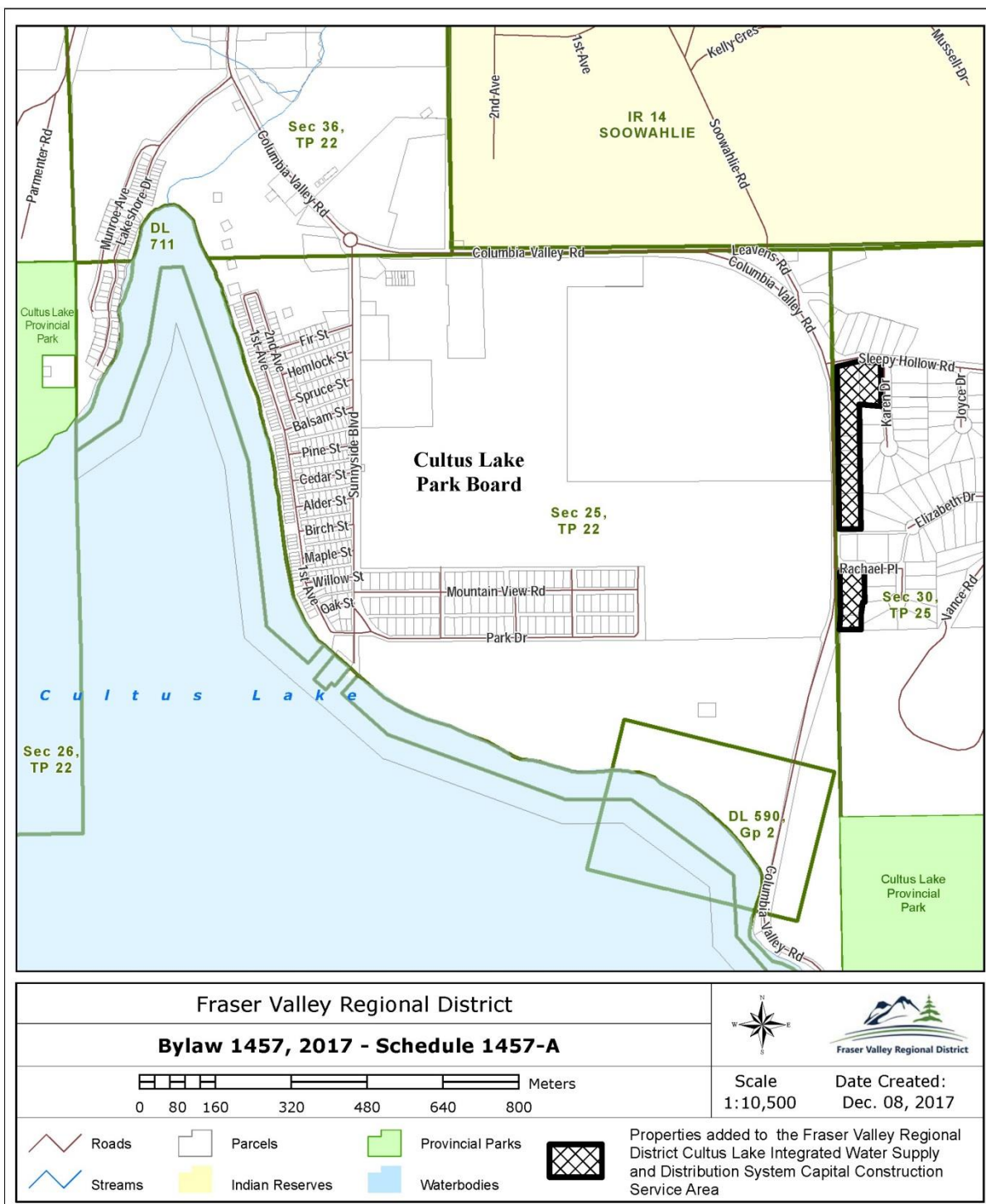
**5) CERTIFICATION**

I hereby certify the foregoing to be a true and correct copy of *Fraser Valley Regional District Cultus Lake Integrated Water Supply and Distribution System Capital Construction Service Area Amendment Bylaw No. 1457, 2017* as adopted by the Fraser Valley Regional District Board on the

Dated at Chilliwack, BC this \_\_\_\_\_

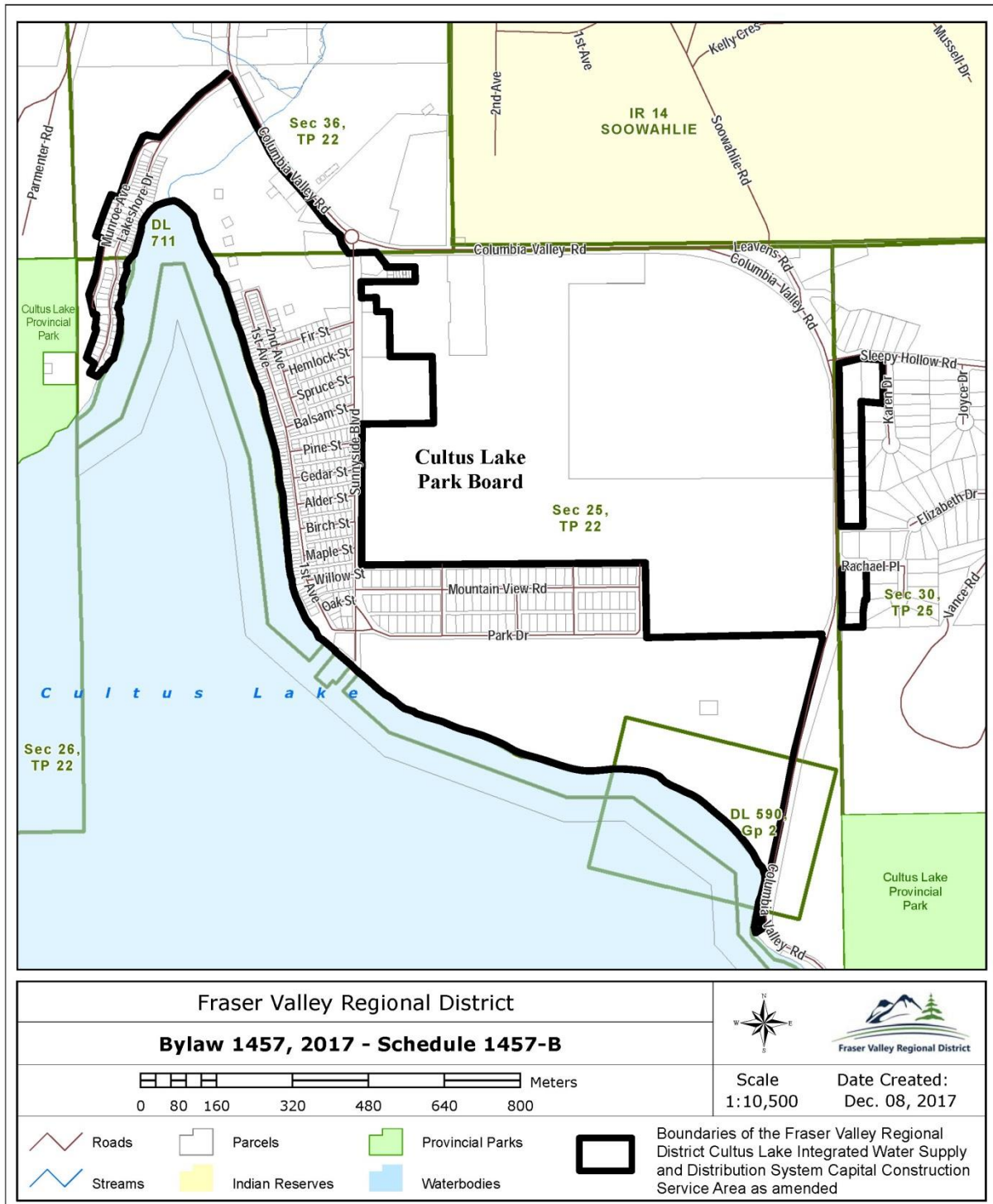
\_\_\_\_\_  
Corporate Officer/Deputy

**FRASER VALLEY REGIONAL DISTRICT BYLAW NO. 1457, 2017**  
**Schedule 1457-A**



This is map 1 of 1 constituting Schedule 1457-A attached to and forming part of *Fraser Valley Regional District Cultus Lake Integrated Water Supply and Distribution System Capital Construction Service Area Amendment Bylaw No. 1457, 2017*.

**FRASER VALLEY REGIONAL DISTRICT BYLAW NO. 1457, 2017**  
**Schedule 1457-B**



This is map 1 of 1 constituting Schedule 1457-B attached to and forming part of *Fraser Valley Regional District Cultus Lake Integrated Water Supply and Distribution System Capital Construction Service Area Amendment Bylaw No. 1457, 2017*