	<b>Trans Mountain Expansion Project</b>  <b>Summary of the Archaeological Impact Assessment of the Proposed Coquihalla Development Stockpile Site, Office and Yard (HOP052) (Spread 5B)</b>	Contractor Revision Date:	2017-07-27
		Contractor Revision No.:	
		Page	1 of 6



## Trans Mountain Expansion Project

# Summary of the Archaeological Impact Assessment of the Proposed Coquihalla Development Stockpile Site, Office and Yard (HOP052) (Spread 5B)

KMC Document # 01-13283-S5B-0000-EV-LTR-0001 R0



Rev No.	Prepared by/ Date	Reviewed by/ Date	Approved by/ Date	Reviewed by TMEP	Pages Revised	Issued Type
0	A. Ronning-Sammet 2017-07-27	S. Bond/H. Bond 2017-07-27	H. Bond 2017-07-27			Issued for Information

July 27, 2018  
File: 123220550

**Attention: Bronwyn Pountney**  
Trans Mountain Pipeline ULC  
2700, 300 - 5 Avenue SW  
Calgary, AB T2P 5J2

Dear Bronwyn,

**Reference: Summary of the Archaeological Impact Assessment of the Proposed Coquihalla Development Stockpile Site, Office and Yard (HOP052) (Spread 5B)**

This letter summarizes the results of the archaeological impact assessment (AIA) completed by Stantec Consulting Ltd. (Stantec) for the Coquihalla Development Stockpile Site, Office and Yard (HOP052) (Figure 1 and Figure 2). It is an excerpt from an interim report (McKnight 2018) that provides AIA results for eight temporary project infrastructure sites along the Trans Mountain Expansion Project (TMEP) right-of-way.

## INTRODUCTION

The 2017 British Columbia Temporary Infrastructure Site Program consists of multi-use sites that are required for Project construction. They consist of offices, camps, stockpile sites, yards and parking areas spread across the TMEP pipeline route from the Alberta boundary to Burnaby, British Columbia.

A desktop overview assessment of the 20 temporary infrastructure sites from the 2017 Temporary Infrastructure Site Program was completed to evaluate the archaeological potential of each proposed site and provide recommendations regarding the appropriate scope of further archaeological work, if any (Stantec 2017). The results of the desktop assessment included recommendations for further archaeological work at eight of the infrastructure sites, including the Coquihalla Development Stockpile Site, Office and Yard, which was assessed to have high archaeological potential based on the area's setting near the Fraser River at its confluence with Jones Creek, and the presence of archaeological sites in similar settings along the river.

The AIA field work for the Coquihalla Development Stockpile Site, Office and Yard was conducted in November 2017 under *Heritage Conservation Act* (HCA) permit 2015-0258.

## RESULTS

The proposed Coquihalla Development Stockpile Site, Office and Yard is a 21.9 ha area located approximately 17 km southwest of Hope, British Columbia. The area is bounded by Jones Creek to the east, the Trans-Canada Highway to the west and north, and Laidlaw Road to the south. Prior to construction of dykes and the highway, the development area would likely have been within the floodplain of the Fraser River, and the eastern portion is within the active floodplain of Jones Creek.

**Reference: Summary of the Archaeological Impact Assessment of the Proposed Coquihalla Development Stockpile Site, Office and Yard (HOP052) (Spread 5B)**

The AIA consisted of pedestrian survey at 10 m spacing covering the portion of the proposed development footprint within approximately 50 m of Jones Creek, and less intensive judgmental survey traverses of the remaining, heavily disturbed western and central portions of the development area. Both the existing TMPL and the proposed TMEP mainline run northeast-southwest through the development footprint.

The terrain near Jones Creek is low-lying and hummocky, with exposures of river sand and gravels, and dry stream channels that are the result of recent flood episodes. No elevated or well-drained landforms were observed. Portions of the creek bank are reinforced with concrete blocks and boulders or have been disturbed by heavy equipment. The forest cover near the creek is a mix of cottonwood, Douglas fir, paper birch, and western redcedar, with an understory of alder, fern, rose and blackberry. The ground cover consists of moss, grass, and horsetail.

The terrain in the western and central portions of the development area is uneven and featureless and has been logged and has been largely disturbed and stripped by heavy equipment. The ground surface is comprised of exposures of gravel, cobbles, and boulders from the previous disturbances. No intact landforms or exposures of native sediments were observed. The vegetation consists of a young regrowth forest of cottonwood, maple, western redcedar, and Douglas fir, with an understory of alder, blackberry, and roses. The ground cover consists of moss and grass.

No archaeological materials or areas with archaeological potential were observed.

## **RECOMMENDATIONS**

No further archaeological work is recommended for the Coquihalla Development Stockpile Site, Office and Yard footprint.

Regards,

**Stantec Consulting Ltd.**

---

**Amanda Ronning-Sammet, MA**  
Archaeologist  
Phone: (250) 655-6984  
amanda.ronning-sammet@stantec.com

---

**Shane Bond, BA, RPCA**  
Principal  
Phone: (250) 655-6050  
shane.bond@stantec.com

Attachment: Figure 1—HCA PERMIT 2015-0258 Coquihalla Development Stockpile Site, Office and Yard (HOP052) Location Map  
Figure 2—HCA PERMIT 2015-0258 Coquihalla Development Stockpile Site, Office and Yard (HOP052)

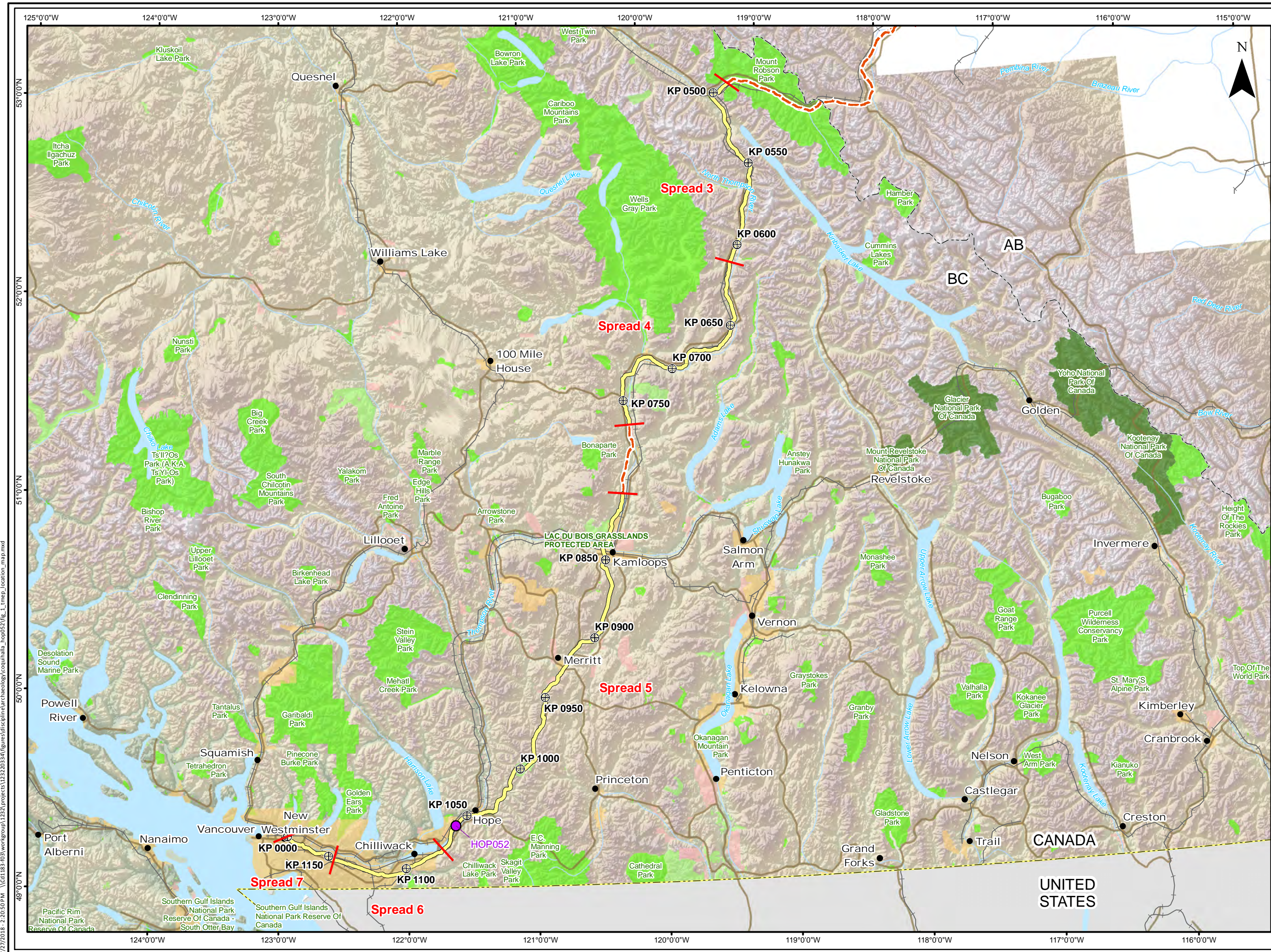
**Reference: Summary of the Archaeological Impact Assessment of the Proposed Coquihalla Development Stockpile Site, Office and Yard (HOP052) (Spread 5B)**

## **REFERENCES**

McKnight, S. 2018. Archaeological Impact Assessment Interim Report for the 2017 Trans Mountain Expansion Project Temporary Infrastructure Site Program. HCA permit 2015-0258. On file with Stantec Consulting Ltd.

Stantec Consulting Ltd. (Stantec). 2017. Desktop Review of Archaeological Potential for the 2017 Trans Mountain Expansion Project Temporary Infrastructure Site Program. On file with Trans Mountain Pipeline ULC and Stantec Consulting Ltd.












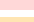

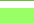
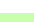






**FIGURE: 1**

**HCA PERMIT 2015-0258**  
**COQUIHALLA DEVELOPMENT**  
**STOCKPILE SITE, OFFICE**  
**AND YARD (HOP052)**  
**LOCATION MAP**

**TRANS MOUNTAIN**  
**EXPANSION PROJECT**

-  Kilometre Post
-  City or Town
-  Coquihalla Development Stockpile Site and Office and Yard (HOP052)
-  Proposed Pipeline Centreline
-  Spread Break
-  Reactivation Section
-  Railway
-  Major Road
-  International Boundary
-  Provincial Boundary
-  Watercourse
-  Waterbody
-  First Nation Reserve
-  Municipality
-  National Park
-  Provincial Park
-  Protected Area/Ecological Reserve/Recreation Area

This document is provided by Kinder Morgan Canada Inc. (KMC) for use by the intended recipient only. This information is confidential and proprietary to KMC and is not to be provided to any other recipient without the written consent of KMC. It is not to be used for legal, engineering or surveying purposes, nor for doing any work on or around KMC's pipelines and facilities, all of which require KMC's prior written approval.

Base data: BC Government, DataBC Parks & First Nations



Although there is no reason to believe that there are any errors associated with the data used to generate this product or in the product itself, users of these data are advised that errors in the data may be present.

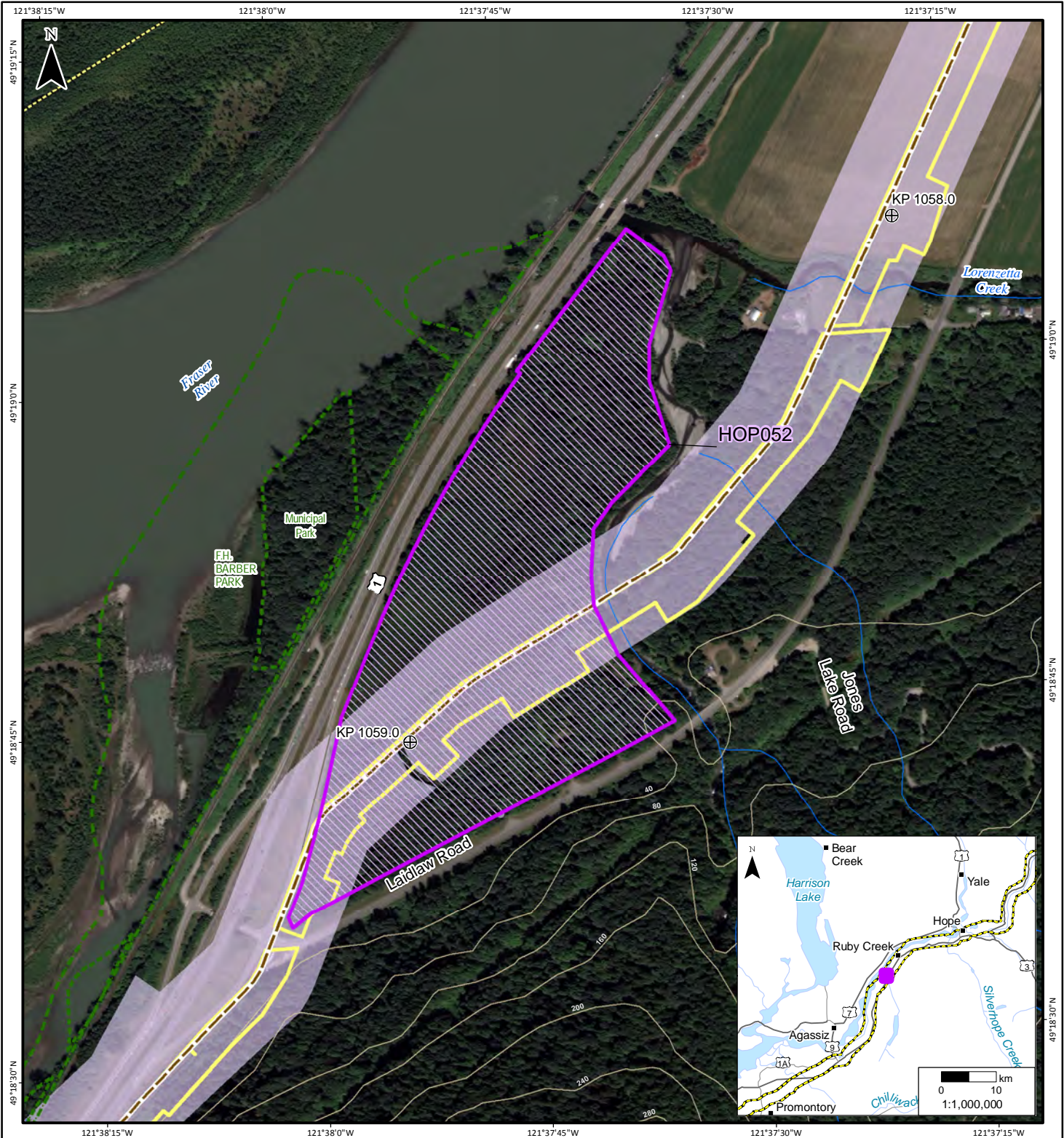
MAP NUMBER		PAGE	
fig_1_tmep_location_map.mxd		SHEET 1 OF 1	
DATE	Jul 2018	REF.	REVISION
SCALE	1:2,000,000	PAGE SIZE	SSEID005.1
DRAWN	T.CARDINAL	CHECKED	ARCHAEOLOGY
		PROJECTION	Lat / Long

SCALE: 1:2,000,000

0 20 40 60 km

ALL LOCATIONS APPROXIMATE





- ⊕ Kilometre Post
- Contour (m)
- Existing Trans Mountain Pipeline
- Watercourse
- AIA Survey Area
- Park/Protected Area
- Proposed Pipeline Construction Footprint
- Previous Survey Coverage

SCALE: 1:7,500



ALL LOCATIONS APPROXIMATE  
This document is provided by Kinder Morgan Canada Inc. (KMC) for use by the intended recipient only. This information is confidential and proprietary to KMC and is not to be provided to any other recipient without the written consent of KMC. It is not to be used for legal, engineering or surveying purposes, nor for doing any work on or around KMC's pipelines and facilities, all of which require KMC's prior written approval.

MAP NUMBER	FIG2_TMHP_HOP052.MXD	PAGE	SHEET
DATE	7/27/2018	REF.	1
SCALE	1:7,500	REVISION	SSEID 005.1
DRAWN	SP	PAGE SIZE	8.5x11
CHECKED	TC	DISCIPLINE	ARCH
		PROJECTION	Lat / Long

Note: only archaeological and historical sites within the application study area are labeled  
Although there is no reason to believe that there are any errors associated with the data used to generate this product or in the product itself, users of these data are advised that errors in the data may be present.



TRANS MOUNTAIN

FIGURE: 2

HCA PERMIT 2015-0258  
COQUIHALLA DEVELOPMENT  
STOCKPILE SITE, OFFICE  
AND YARD (HOP052)

TRANS MOUNTAIN  
EXPANSION PROJECT