



Laidlaw Road – Stockpile Site FVRD: Temporary Use Permit Application

Louis Renaud, Project Manager
Kate Stebbings, Stakeholder Engagement
August 23, 2018



TRANSMOUNTAIN



**KINDER MORGAN
CANADA LIMITED**

Trans Mountain Expansion Project



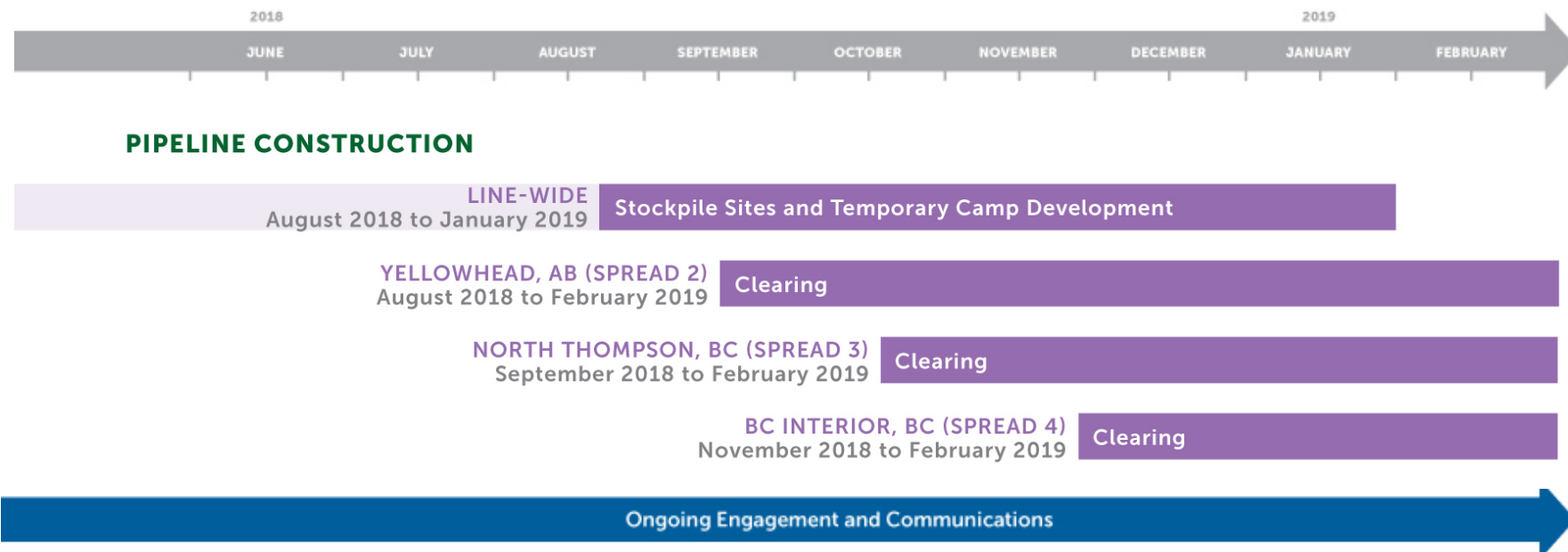
- Government of Canada granted approval for the Trans Mountain Expansion Project on November 29, 2016
- On May 29, 2018, the Government of Canada announced it would purchase the Expansion Project and related pipeline and terminal assets
- Project planning and construction work is now underway
- Project pre-construction, construction and monitoring activities must address appropriate permits and regulation requirements
- Existing Trans Mountain Pipeline operations are continuing as normal



**KINDER MORGAN
CANADA LIMITED**



Six-Month Project Construction Timeline*



Shading denotes continuation of previous activities

The construction schedule above is based on inputs from contractor construction schedules and preliminary Project construction execution plans. These schedules are subject to change which may be a result of construction execution updates, timing restrictions in respect of NEB condition approvals, permits, land and crossing agreements or other regulatory constraints, as well as other potential mitigation or acceleration measures.

YELLOWHEAD, AB (SPREAD 2)

- Includes approximately 290 km of pipeline between Edmonton and Jasper National Park in Alberta

NORTH THOMPSON, BC (SPREAD 3)

- Is approximately 120 km of pipeline between Mt. Robson Provincial Park and Blue River in BC's North Thompson

BC INTERIOR (SPREAD 4)

- Is approximately 155 km of pipeline from Blue River to Trans Mountain's Darfield pump station, north of Kamloops

* Project schedule is subject to change



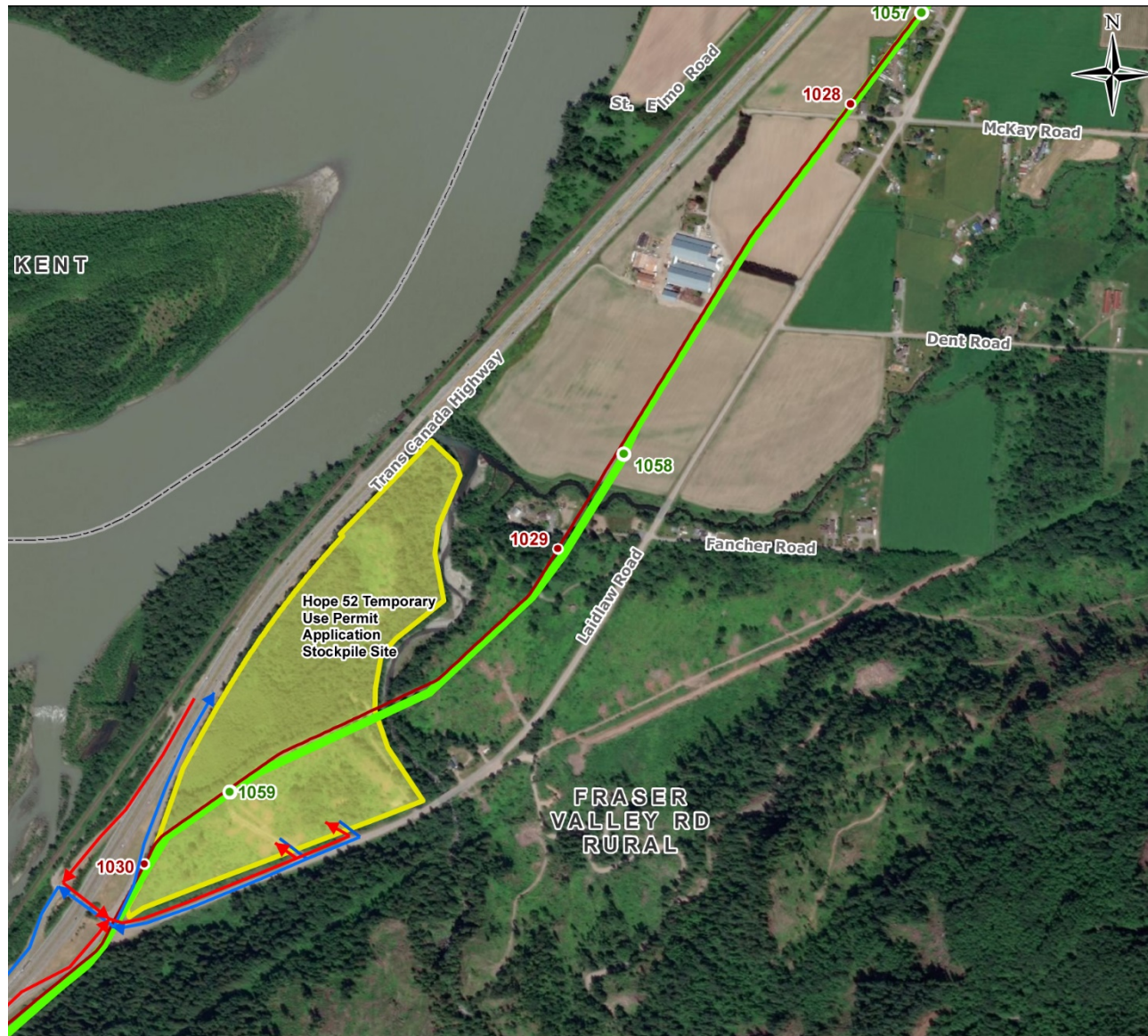
**KINDER MORGAN
CANADA LIMITED**

Temporary Site Development

- Work is underway to develop temporary infrastructure sites and will continue in 2018 along the entire pipeline route
- Temporary infrastructure sites include:
 - Stockpile sites
 - Construction yards
 - Camps
- Work consists of:
 - Site preparation
 - Installation of safety fencing, lighting and security cameras
 - Installation of temporary buildings for construction offices or worker accommodation (where required)



Hope 52 (Laidlaw Road) Stockpile



Hope 52: Site Preparation

- Clearing and grubbing
 - Timber previously removed by landowner
- Grading
- Gravel
- Perimeter drainage ditching
- Perimeter fencing and security



Construction: Minimizing Disruption

- Dust from construction vehicles and clearing activities will be limited through:
 - Speed control
 - Site watering
 - Dust suppressants
- The Noise Management Plan identifies techniques to limit noise effects, including:
 - Construction scheduling (daytime hours)
 - Equipment selection
 - Vehicle operation
- Lights are used to enhance worker safety and site security. Impacts will be minimized by:
 - Directional lighting (pointing to the ground)
 - Turning off lights when not required



Hope 52: Site Use



Planned use (fall 2018):

- Pipe will be stored on-site
- A small construction trailer will be placed on-site for worker office and shelter
- Portable toilets will be installed
- All waste will be commercially managed - trucked off-site and disposed of at appropriate facilities
- Security lights and cameras will be installed

The site will not be used for:

- Camps/camp services
- Worker marshalling
- Hazardous waste storage



Traffic

- Vehicles will access the site between 6 am and 7 pm, Monday to Saturday
- Following the initial transportation of pipe to the stockpile site, traffic volume will be reduced significantly until the start of construction in 2019
- The use of Laidlaw Road will be managed under MoTI permit restrictions to ensure load restrictions are appropriate for the road surface
- Any road repairs related to Project activity will be completed by Trans Mountain



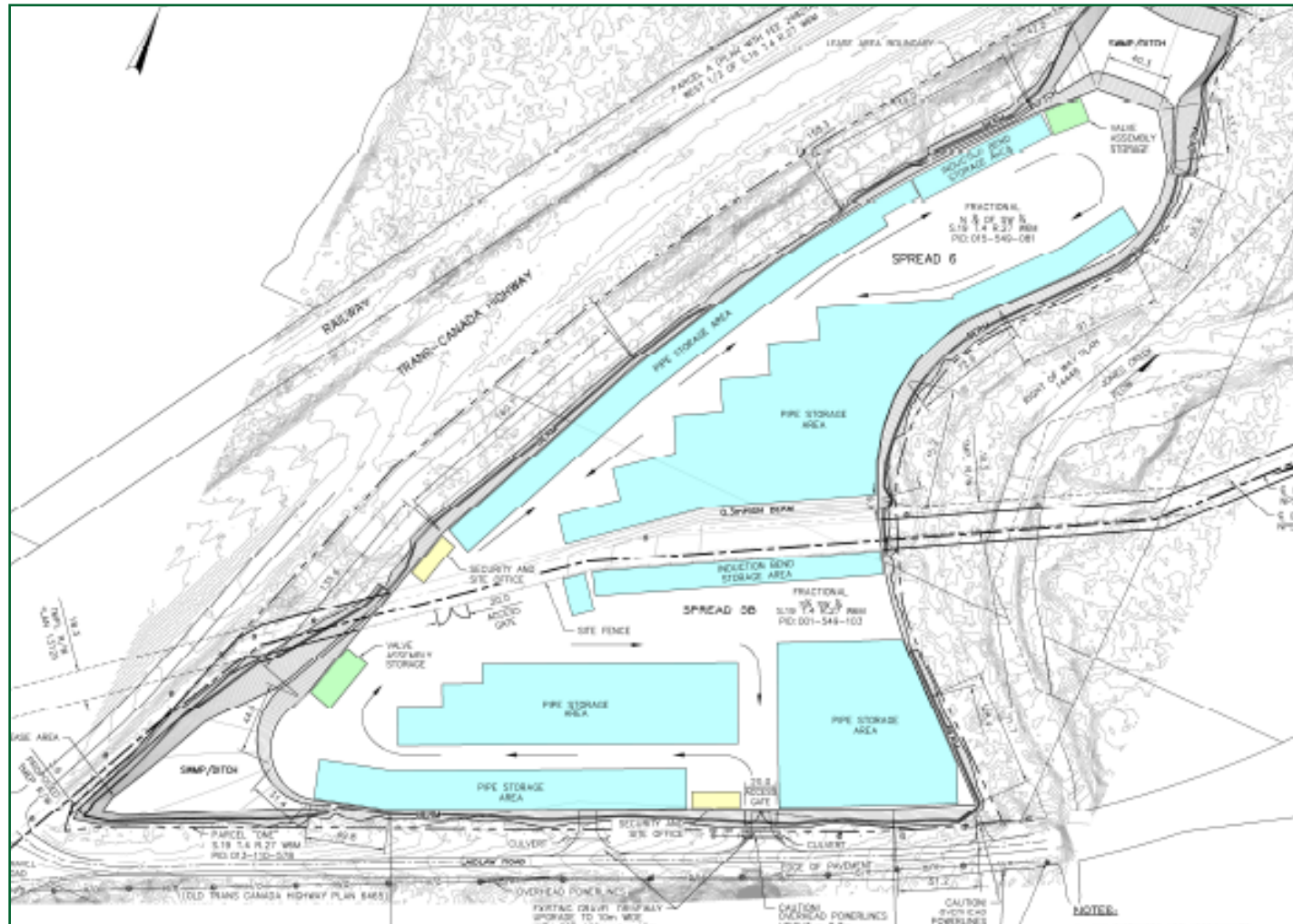
Traffic Flow

Project-related traffic will have a small impact when assessed against background traffic volumes.

Vehicle Type	Average Construction Activities	Peak Construction Activities
Light Vehicles	5 trips during AM	20 trips during AM
	5 trips during PM	20 trips during PM
Transport Trucks	20 loads per day	30 loads per day



Hope 52: Temporary Stockpile Site



Hope 52: Site Reclamation



- Trans Mountain will put the site on a trajectory towards its pre-construction state
- Reclamation activities include:
 - Gravel disposal
 - Revegetation
 - Weed control
- Five-year monitoring period



Complaints and Inquiry Process

- Trans Mountain has a clear process for submission and management of Project questions and complaints
- All questions and complaints are tracked and reported
- Contact options include email, phone and mail
- Response is based on urgency
 - Emergency contact information is available 24/7
 - Time-sensitive questions and complaints:
 - Automated acknowledgement
 - Status update within 24 hours
 - Non-urgent questions and complaints:
 - Automated acknowledgement
 - Status update within five business days



We Want To Hear From You



CONTACT US: Trans Mountain Expansion Project

 info@transmountain.com

 1.866.514.6700

 transmountain.com


  @TransMtn

 youtube.com/transmtn

 soundcloud.com/transmountain

Provide Your Feedback:

 transmountain.com/contact-us

 6025 Sussex Street
PO Box 81018, South Burnaby
Burnaby, BC, V5H 3B0 CANADA



**KINDER MORGAN
CANADA LIMITED**