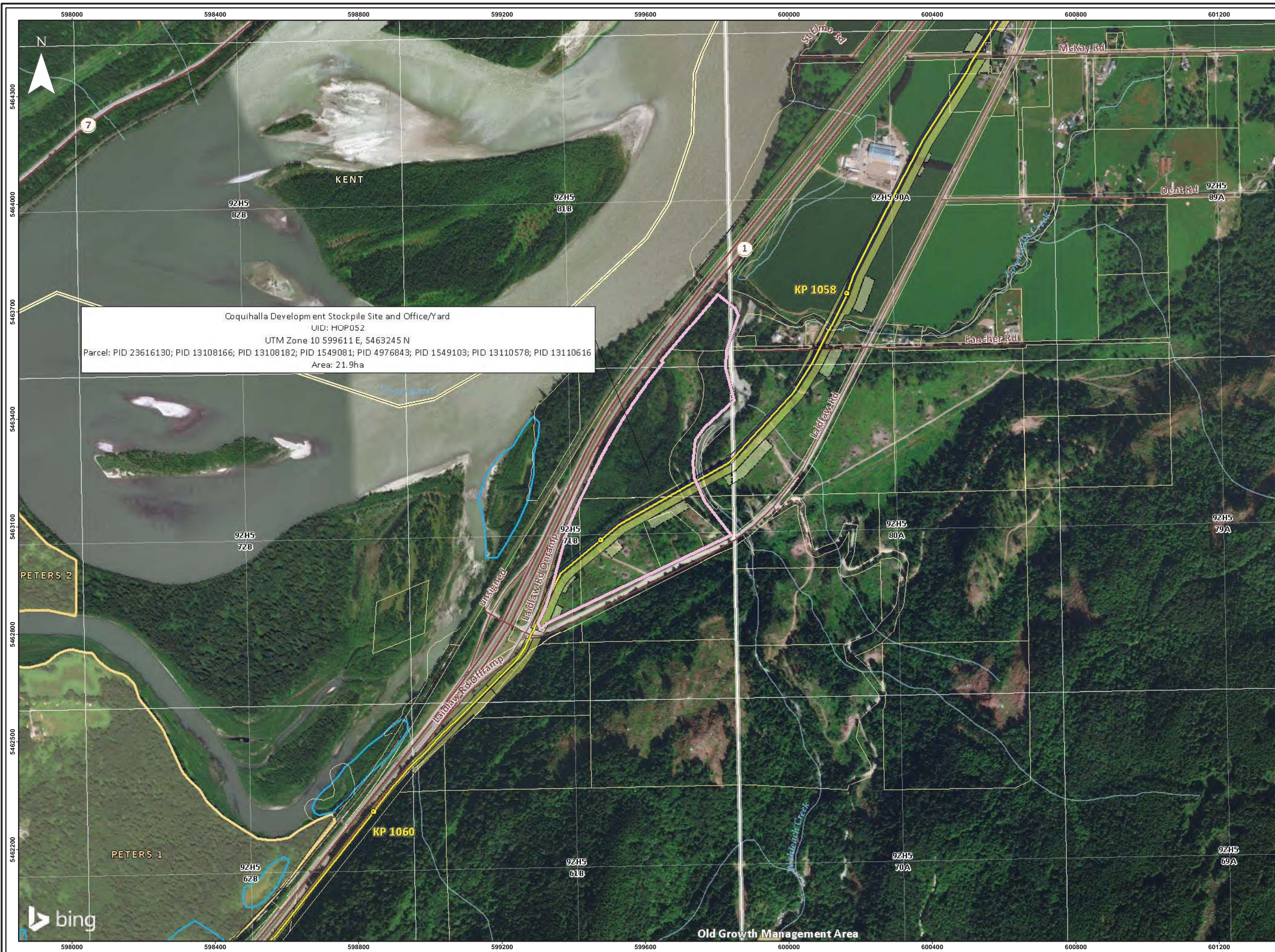



201612_MAP_CH2M_FAC_00975_Rev1.mxd



Coquihalla Development Stockpile Site and Office/Yard
UID: HOP052
UTM Zone 10 599611 E, 5463245 N
Parcel: PID 23616130; PID 13108166; PID 13108182; PID 1549081; PID 4976843; PID 1549103; PID 13110578; PID 13110616
Area: 21.9ha



TEMPORARY CONSTRUCTION LANDS AND INFRASTRUCTURE AND ASSOCIATED ACCESS ROADS

SHEET 16 OF 23


TRANS MOUNTAIN EXPANSION PROJECT

- KP Marker
- TMEP Pipeline
- Deactivated / Overgrown Access Road
- New Temporary Access Road
- Other Access Road
- Camp / Stockpile / Construction Yard
- Easement
- Extra Temporary Workspace
- Log Deck
- Temporary Workspace
- Highway
- Paved Road
- Resource Road
- Railway
- City / Town / District Municipality
- Indian Reserve / Métis Settlement
- Land Parcel
- Old Growth Management Area
- Sensitive Raptor Range
- Sharp-tailed Grouse Range
- Trumpeter Swan Water / Watercourse (with 800m Buffer)
- Waterbody / Watercourse
- Wetland


Projection: NAD 1983 UTM Zone 10N.
Pipeline SSEID005.1, KPs & Footprint provided by UPI April 3, 2017; Access Roads provided by UPI Feb 6, 2017 (AB) and Apr 3, 2017 (BC); Camps and Stockpiles: KMC August 11, 2017; Transportation: AltaLIS 2016, BC MFLNRO 2012 & NRCAN 2015; Hydrology: BC MFLNRO 2018 & NRCAN 2007-2011; Geopolitical Boundaries: AltaLIS 2017, BC MCSCD 2016 & NRCAN 2003; First Nation Lands: AltaLIS 2010, Government of Canada 2017; Old Growth Management Areas: BC MFLNRO 2017; Alberta Wildlife Sensitivity: AEP, GOA 2016; Land parcels provided by Opus Stewart-Weir, August 15, 2017; Wetlands: CH2M 2017; ATS, DLS, NTS & PNG Grids: TERA Environmental Consultants, 2008 & 2009; Service Layer Credits: © 2017 DigitalGlobe Image courtesy of USGS © 2017 GeoEye © Province of British Columbia Earthstar Geographics SIO © 2017 Microsoft Corporation.

This document is provided by Kinder Morgan Canada Inc. (KMC) for use by the intended recipient only. This information is confidential and proprietary to KMC and is not to be provided to any other recipient without the written consent of KMC. It is not to be used for legal, engineering or surveying purposes, nor for doing any work on or around KMC's pipelines and facilities, all of which require KMC's prior written approval.

Although there is no reason to believe that there are any errors associated with the data used to generate this product or in the product itself, users of these data are advised that errors in the data may be present.



MAP NUMBER	201612_MAP_CH2M_FAC_00975_REV1	PAGE	SHEET 16 OF 24
DATE	August 2017	TERA REF.	687945
SCALE	1:10,000	PAGE SIZE	11x17
DRAWN	JRO	CHECKED	DJN
DISCIPLINE	FAC	DESIGN	CMR



ALL LOCATIONS APPROXIMATE