

JOB CREATION PARTNERSHIP PROJECT SUMMARY

David Urban
Manager of Outdoor Recreation Planning
December 11, 2018

JOB CREATION PARTNERSHIP

Grant funding opportunity:

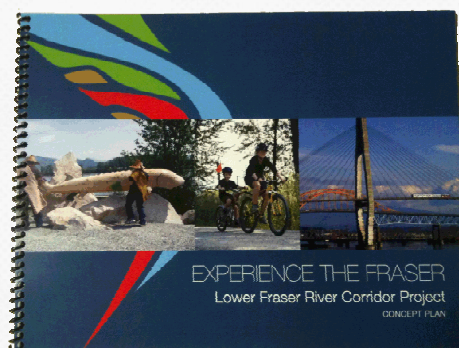
- 5 EI eligible individuals
- 7 months work experience
- Partnership with Ecoworks Landscape Services
- \$482,000 in provincial funding



JCP PARTICIPANTS



JOB CREATION PARTNERSHIP



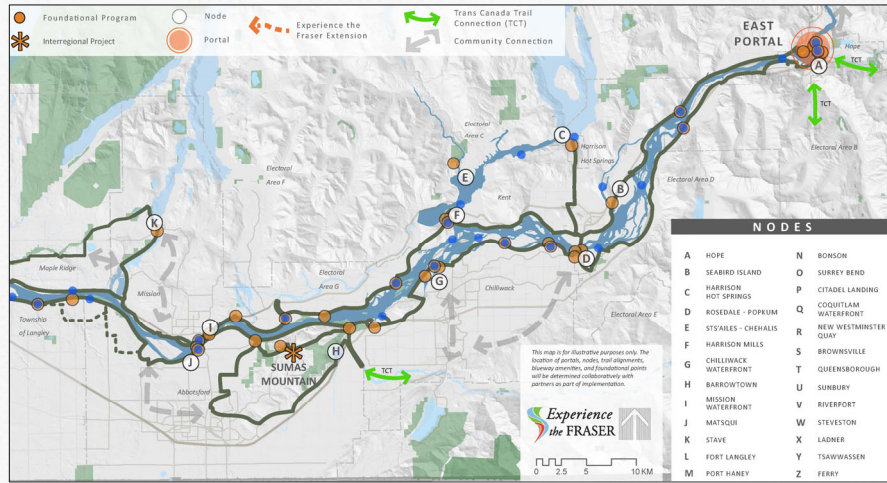
Concept Plan



Implementation Plan

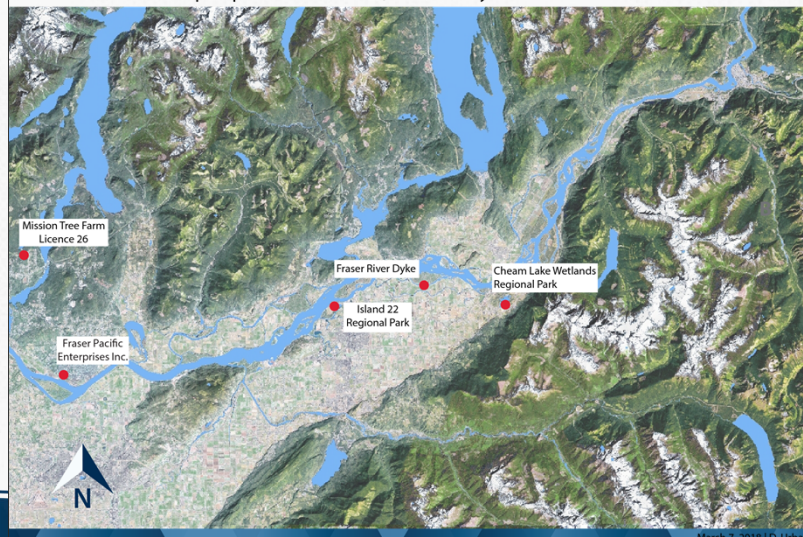


JOB CREATION PARTNERSHIP

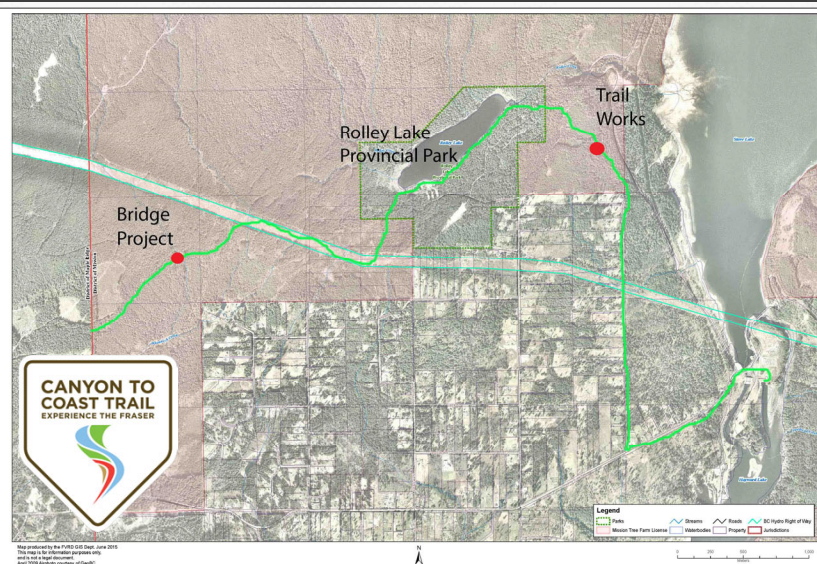


JOB CREATION PARTNERSHIP

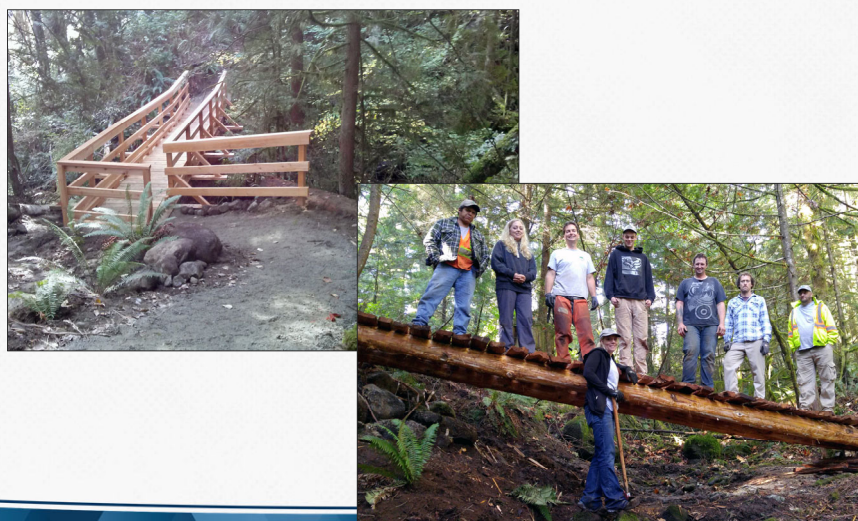
Job Creation Partnership: Experience the Fraser, Fraser Valley



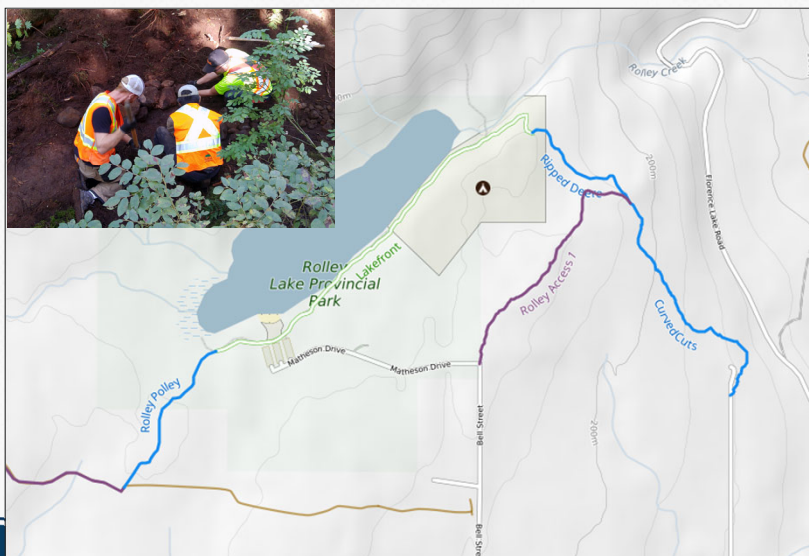
MISSION TREE FARM LICENCE 26, MISSION



MISSION TREE FARM LICENCE 26, MISSION



ROLLEY LAKE PROVINCIAL PARK, MISSION



CHEAM LAKE WETLANDS REGIONAL PARK, EA D



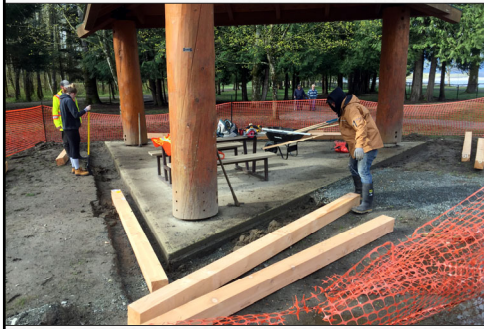
ISLAND 22 REGIONAL PARK, CHILLIWACK



ISLAND 22 REGIONAL PARK, CHILLIWACK



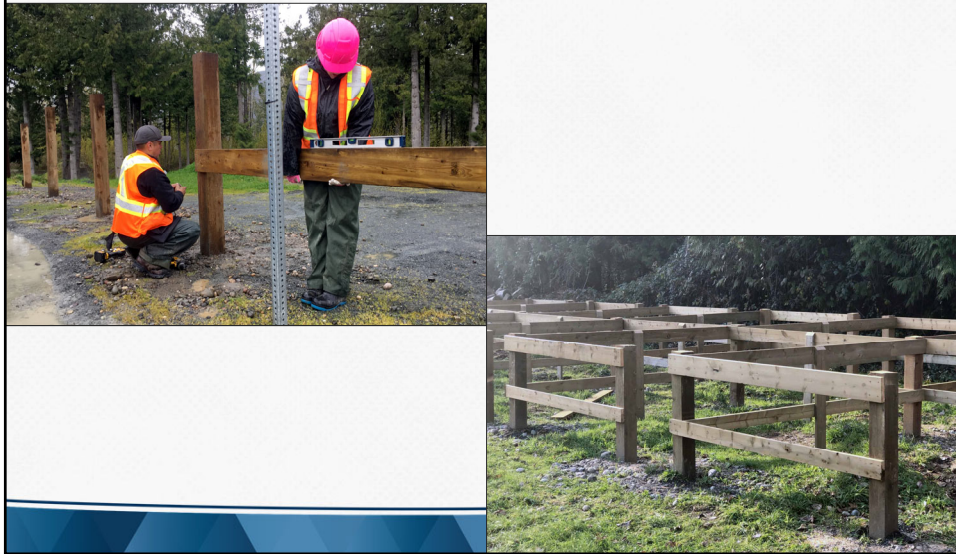
ISLAND 22 REGIONAL PARK, CHILLIWACK



ISLAND 22 REGIONAL PARK, CHILLIWACK



ISLAND 22 REGIONAL PARK, CHILLIWACK



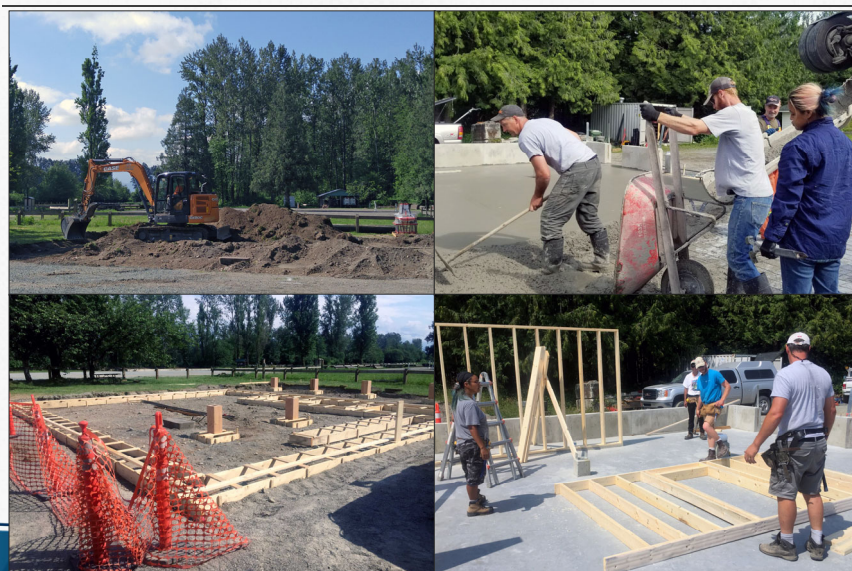
ISLAND 22 REGIONAL PARK, CHILLIWACK



ISLAND 22 REGIONAL PARK, CHILLIWACK



ISLAND 22 REGIONAL PARK, CHILLIWACK



ISLAND 22 REGIONAL PARK, CHILLIWACK



ISLAND 22 REGIONAL PARK, CHILLIWACK



QUESTIONS

